

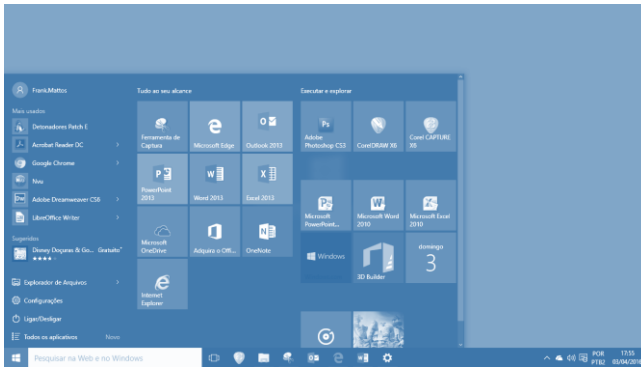
WINDOWS 10

1 - BARRA DE TAREFAS

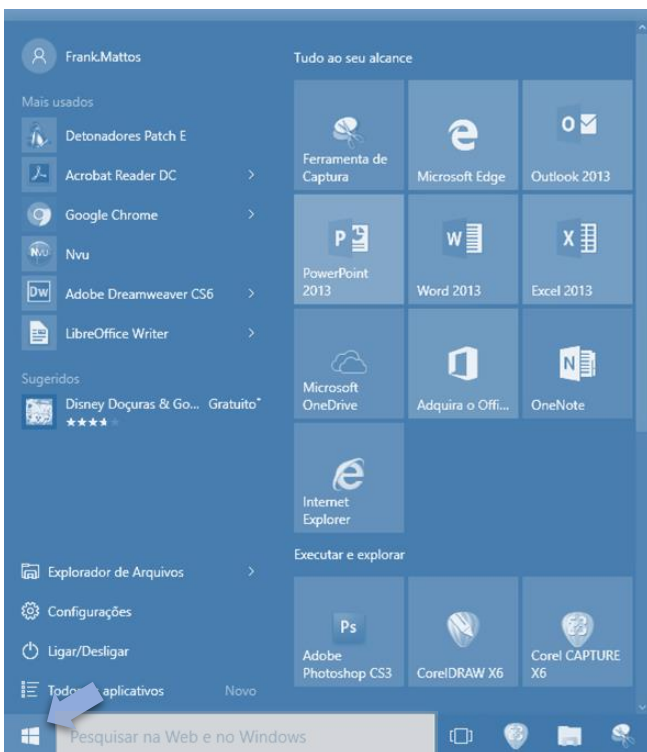
Menu Padrão



Menu Dimensionável



1.1 - BOTÃO INICIAR



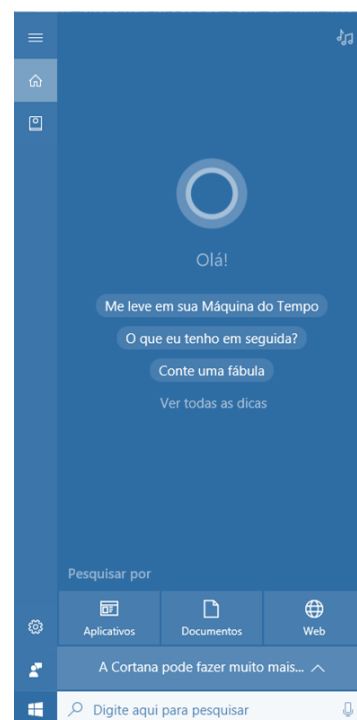
1.2 - MENU AUXILIAR



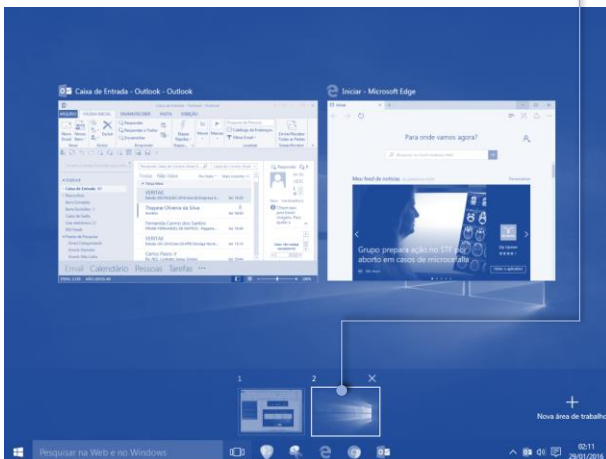
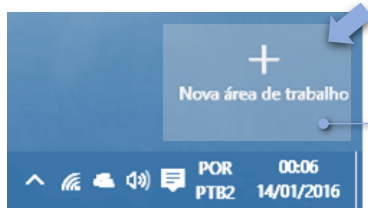
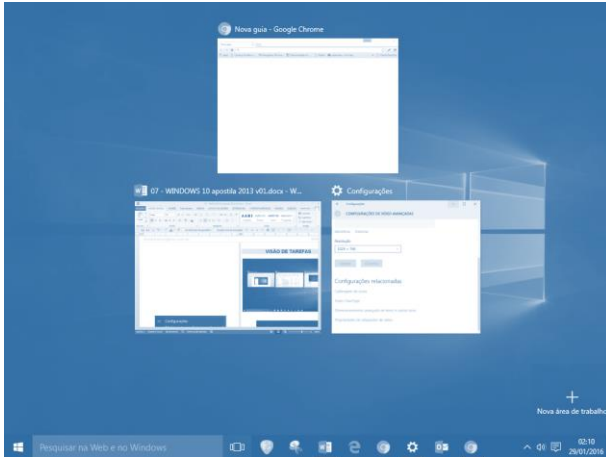
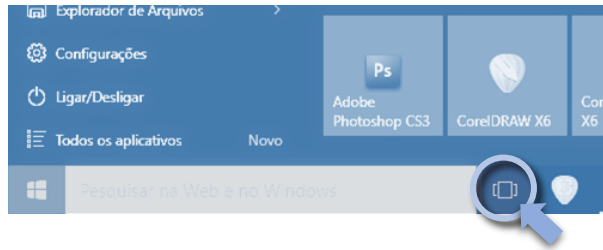
1.4 - BOTÕES DO MENU INICIAR



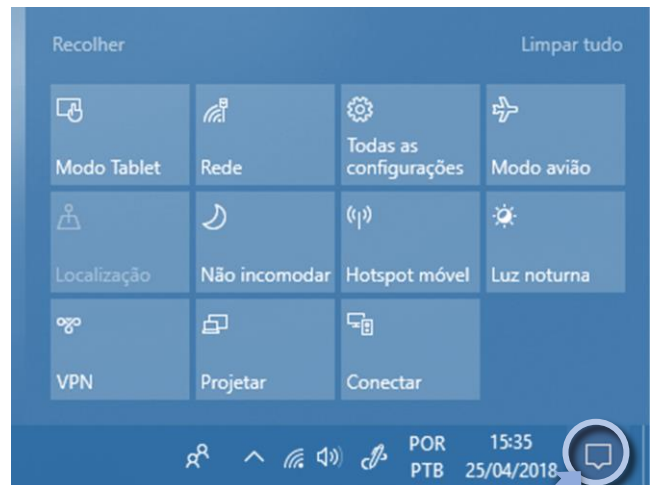
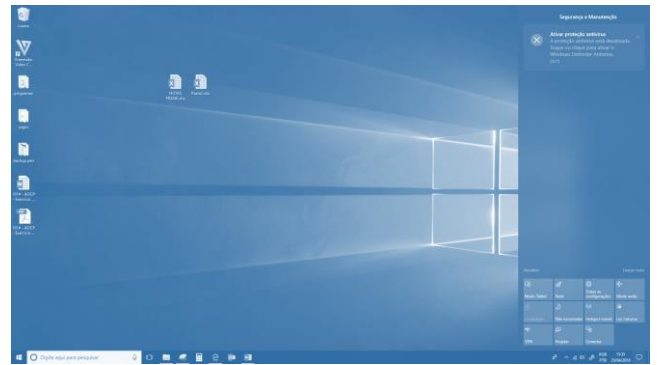
1.6 - CORTANA



1.7 - VISÃO DE TAREFAS



1.9 - NOTIFICAÇÃO (CENTRAL DE AÇÕES)



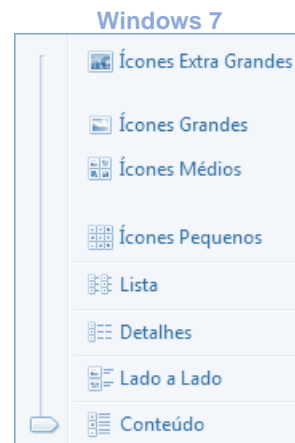
2 - RECURSOS

2.1 - EFEITOS

Existem 5 efeitos no Windows 7:

- ✓ Aero Glass (janelas translúcidas);
- ✓ Aero Flip (alternar janelas em 3D);
- ✓ Aero Snap (divide a tela em duas janelas);
- ✓ Aero Shake (minimiza as outras janelas) e
- ✓ Aero Peek (janelas transparentes mostrando desktop).

2.4 - MODO DE EXIBIÇÃO

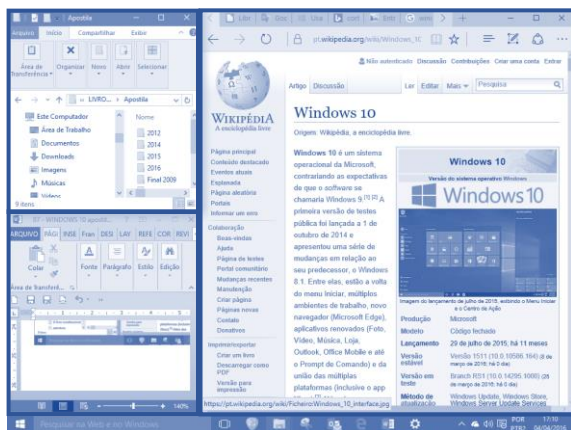
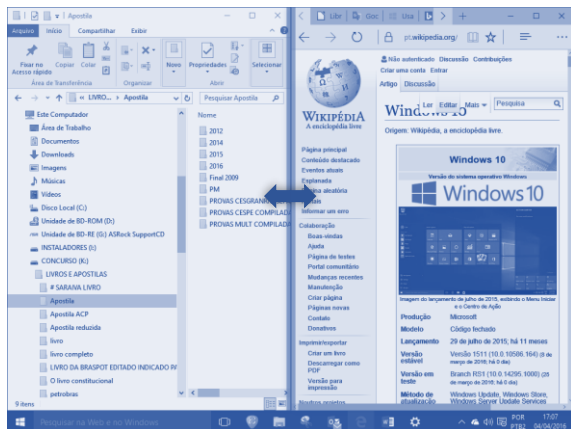


2.5 - ESTRUTURAS DE PASTAS E UNIDADES

HIERARQUIA WINDOWS 7

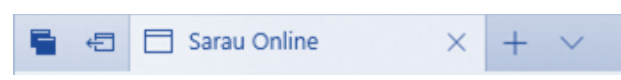


2.6 - MULTITAREFAS

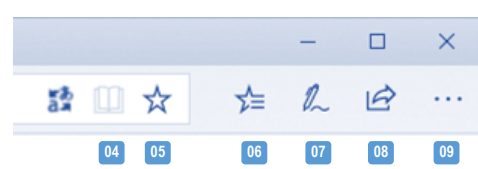


3 - EDGE

3.1 - GUIAS



3.4 - BARRA DE COMANDOS

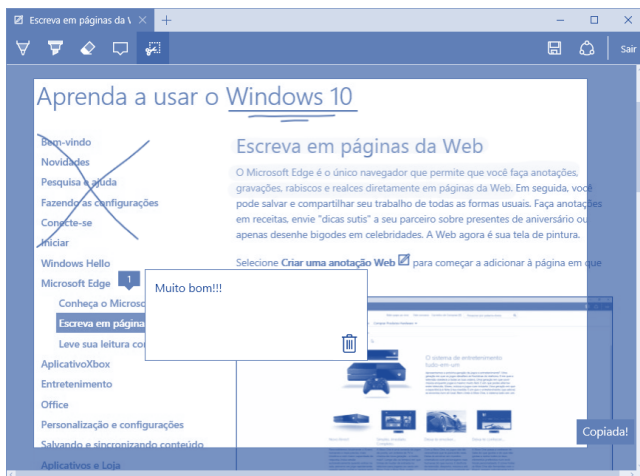
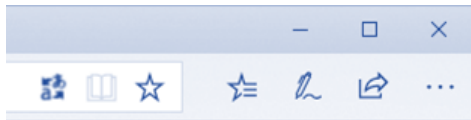


- 4 Modo de leitura
- 5 Adicionar aos Favoritos ou a Lista de leitura
- 6 Hub (Favoritos, Lista de leitura, Histórico e Downloads)
- 7 Criar uma Anotação Web
- 8 Compartilhar Anotação Web
- 9 Menu

MODO DE LEITURA



3.6 - CRIAR UMA ANOTAÇÃO WEB



- Caneta ¹
- Marca-texto ²
- Borracha ³
- Anotações ⁴
- Recortar ⁵

3.9 - MENU

